

EAST 19TH STREET NEIGHBORHOOD MEETING

**Department of Public Services/
Transportation Services Division**

January 29, 2014

BACKGROUND

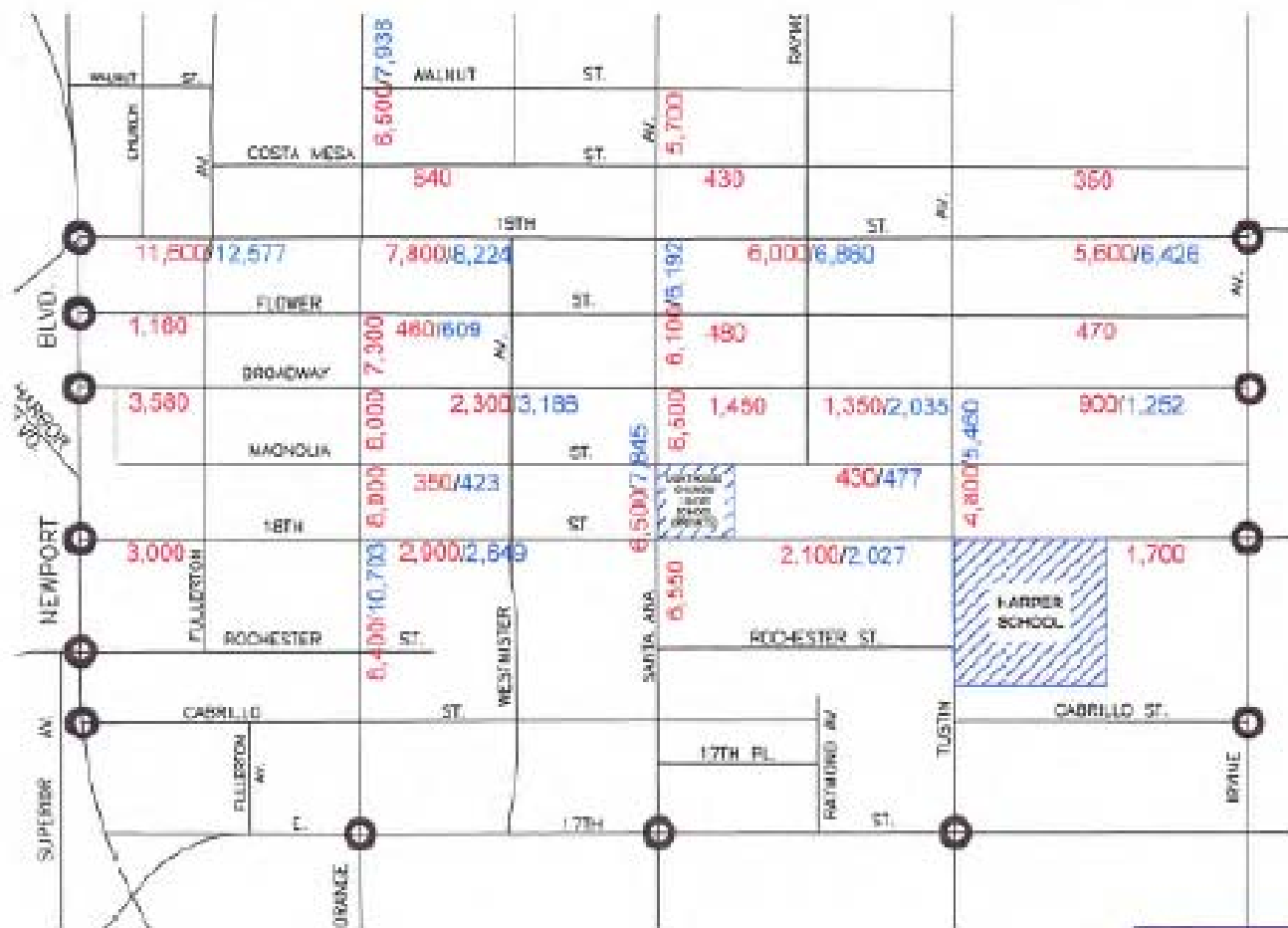
- **Neighborhood Traffic Issues**
 - Cut Through Traffic
 - Speeding
- **East 19th Street Downgraded to 2-Lane Collector in the 1990s**

BACKGROUND

- **Measures Implemented Over Past Few Years Included:**
 - **East 17th Street Improvements at Three Intersections – Orange, Westminster and Santa Ana**
 - **Newport Boulevard – Additional Lane in Northbound Direction**
 - **Stop-Signs, Neighborhood Warning Signs, Striping Modifications Throughout Eastside Area**
 - **Broadway Improvements**

BROADWAY REPORT

- **Broadway was Widest Street in Neighborhood with 50 Feet Curb-to-Curb Width Between Fullerton Avenue and Tustin Avenue**
- **Project Reduced Street Width by 4 Feet**
- **Landscaped Medians and Chokers Added**
- **Results of Project**
 - **Speeding Reduced by About 5 MPH**
 - **Reduction in Accidents**
 - **No Change in Overall Traffic Patterns**



Legend

2,100 :2013 AVERAGE DAILY TRAFFIC

1,450 :2009 AVERAGE DAILY TRAFFIC



EXHIBIT 3
AVERAGE DAILY TRAFFIC



Legend

28.9 :2013 SPEED SURVEY

31.9 :2006 SPEED SURVEY

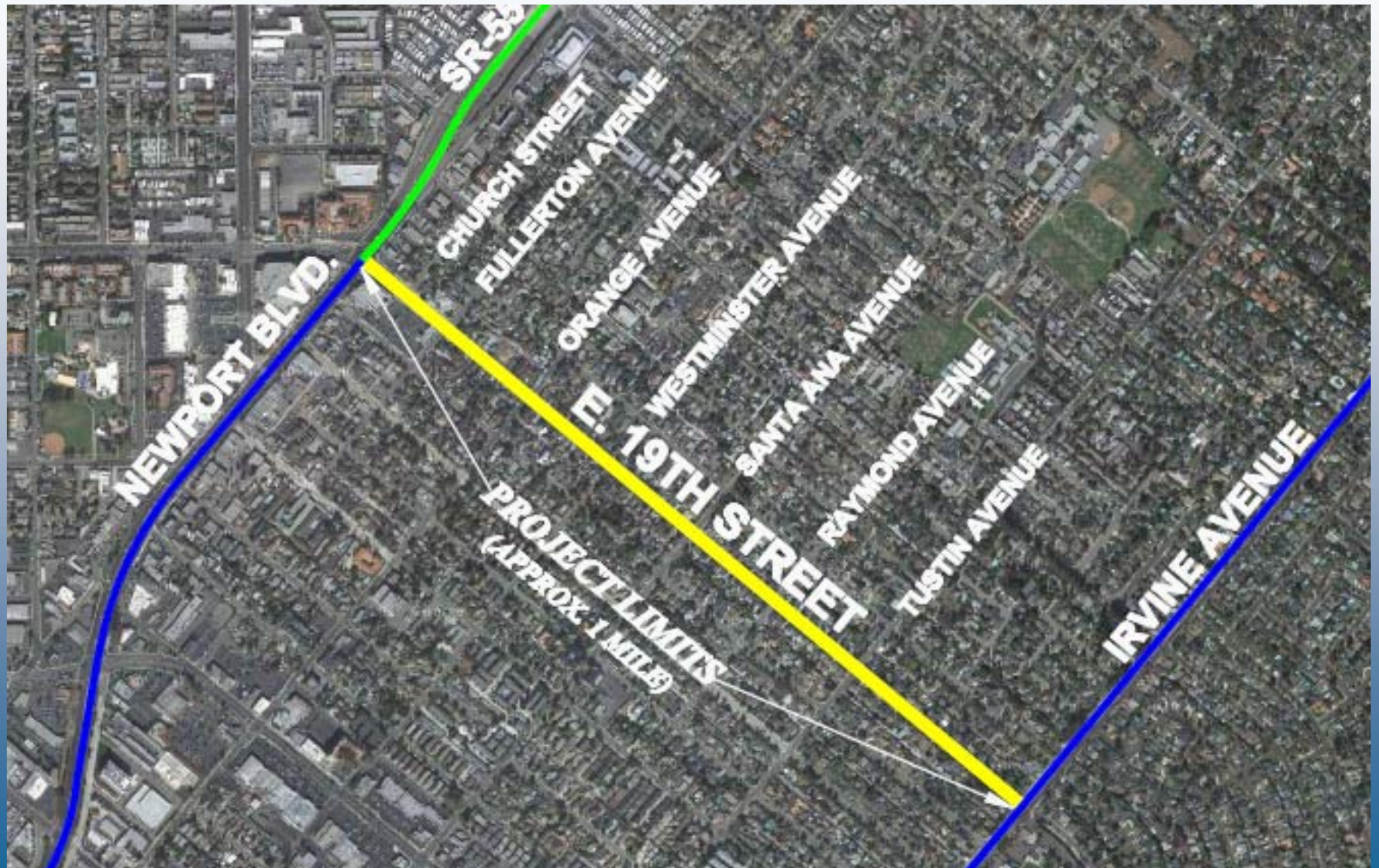


EXHIBIT 4 EASTSIDE SPEED SURVEY

EAST 19TH STREET PROJECT

- **Landscaped Chokers at Intersections**
- **Landscaped Medians Only at Entry Points at Fullerton Avenue and Irvine Avenue**
- **Entry Monument Signs at Fullerton Avenue and Irvine Avenue**
- **Funding by Federal Safe Route to School Grant - \$855,700**

East 19th Street Project Limits



East 19th Street Project



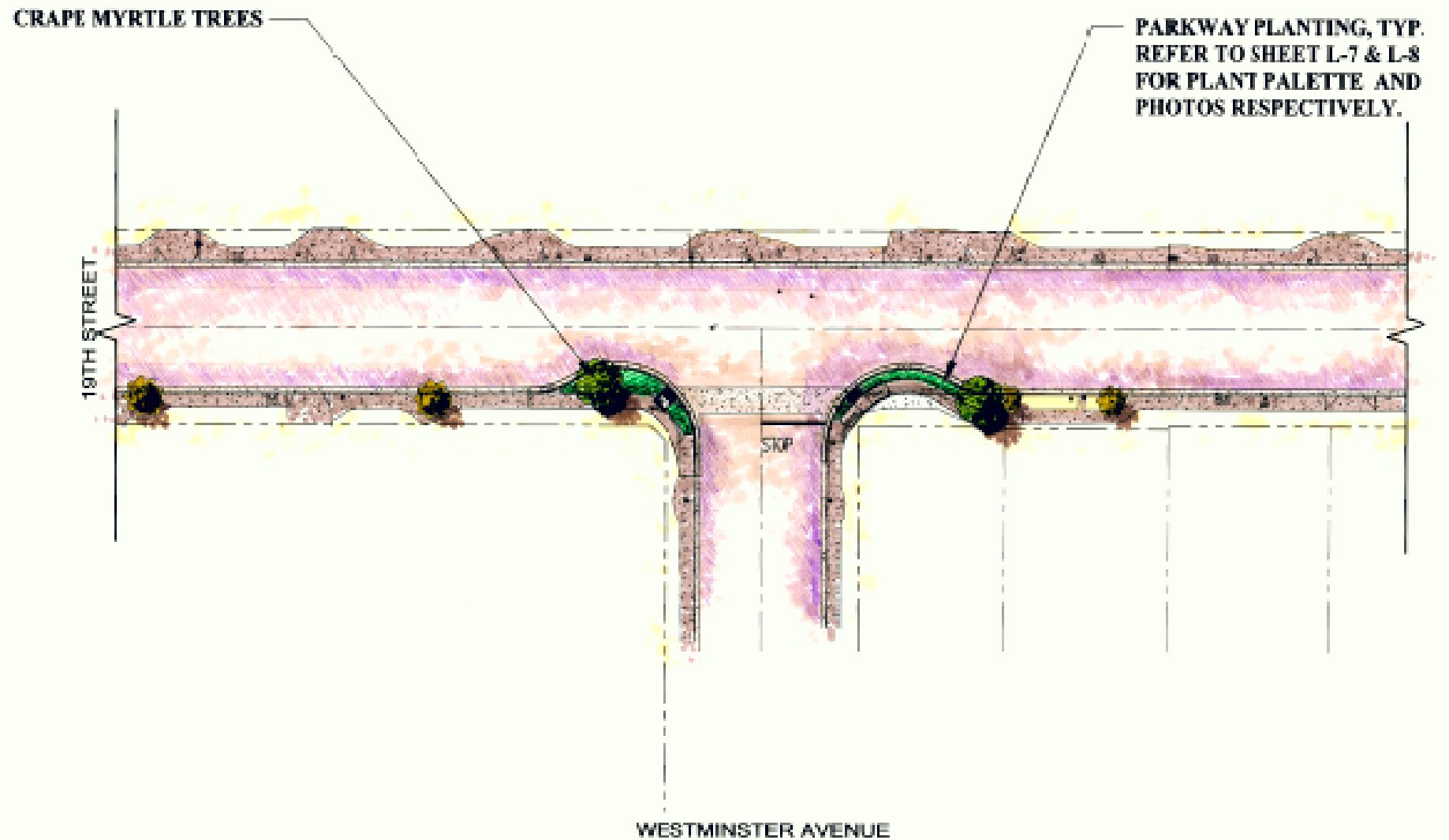
East 19th Street/Fullerton Avenue



East 19th Street/Orange Avenue



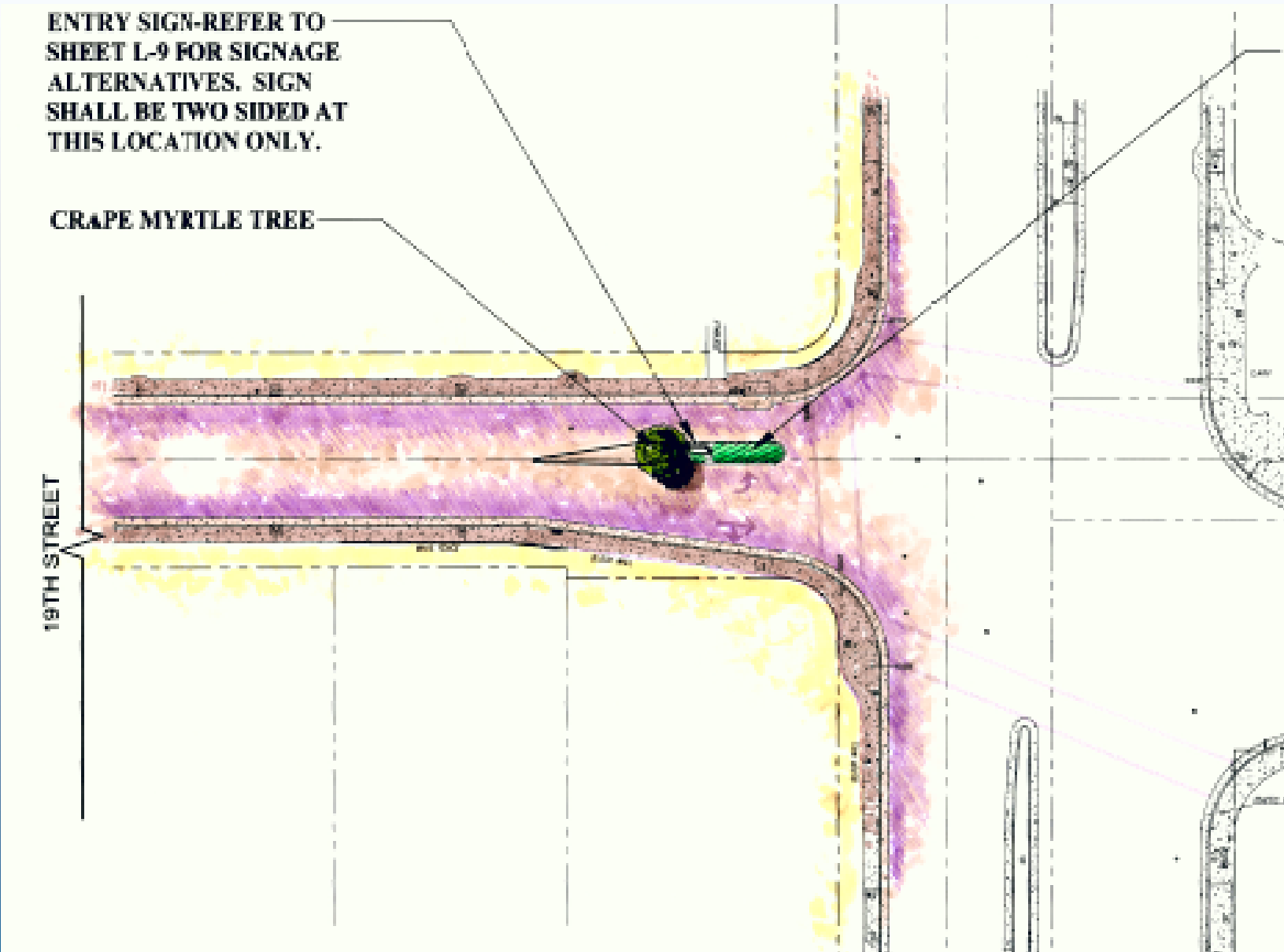
East 19th Street/Westminster Avenue



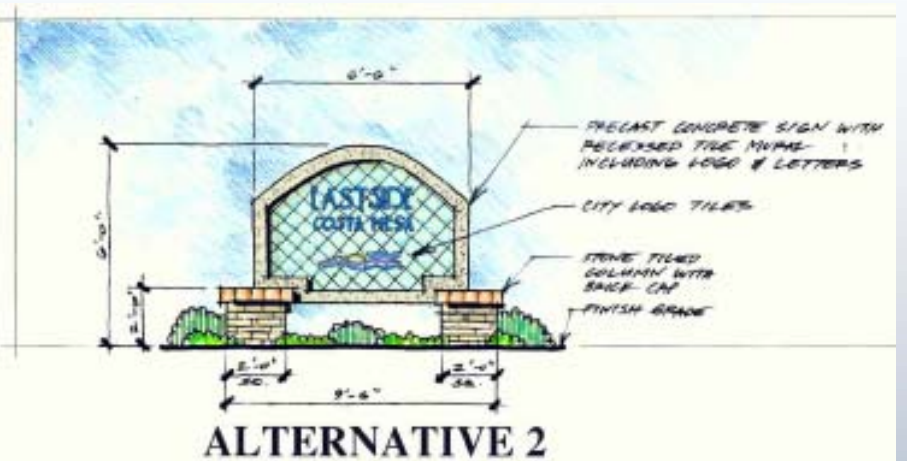
East 19th Street/Irvine Avenue

ENTRY SIGN-REFER TO SHEET L-9 FOR SIGNAGE ALTERNATIVES. SIGN SHALL BE TWO SIDED AT THIS LOCATION ONLY.

CRAPE MYRTLE TREE



Monument Sign Options



NEXT STEPS

- **Continue to work on design**
- **Follow up Neighborhood Meeting in April**
- **Parks and Recreation Commission
Presentation of Landscaping and
Monument Signs**